

The Bethel Bell



May 2023

Phone: (360) 892-4231

[Click to Visit our Website](#)

Volume 30, Issue 5

email: blcoffice@bethelbrushprairie.org

Bethel Bell May 2023 Pastor's Stuff

Pastor's Page: What is the ELCA? Part 2

In April, I began a series of articles about our denomination, the Evangelical Lutheran Church in America (ELCA), and how we fit into it as a congregation. Check out our website for the first article in [April's Bethel Bell](#).

This month we will consider the structure of the ELCA. Similar to the idea of the Trinity, there are three distinct parts of the ELCA the churchwide expression, the synods, and the congregations, but they are one denomination.

It's a bit like a Venn diagram, sort of...

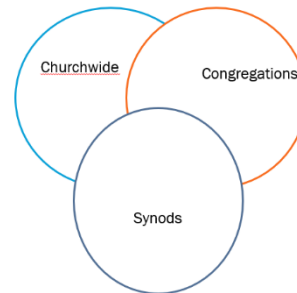
The churchwide expression is the ELCA. The ELCA assembly, made up of church folks from congregations like ours, elects a bishop to serve the churchwide expression. Currently, Bishop Elizabeth Eaton is serving her second 6-year term which will end in 2025. The Vice President is a lay person (non-clergy) and the newly elected VP is [Imran Siddiqui](#). Click on his name to read his interesting bio!

The synods are the ELCA. The word "synod" comes from a Greek word meaning "walking the road together." There are 65 synods in the ELCA, made up of 30 (Alaska) to 300 congregations, depending on the geography and concentration of congregations in each. We are in the **Southwestern Washington Synod** that is made up of 88 congregations and spans from the Columbia River to Tacoma and Federal Way, and then up the Olympia Peninsula,.

Bishop Rick Jaech (pronounced "Jake") is serving his 2nd 6-year term as our synod bishop, concluding in 2025. Bishop Jaech served Beautiful Savior Lutheran in Vancouver before being elected synod bishop. Serving on the synod staff are Bishop's Associates, Rebecca Shjerven and Joey Ager. Bethel worked primarily with Pastor Rebecca when you went through the call process this last time. Joey Ager also has the title of Director of Evangelical Mission helping new worshipping communities get started and established congregations in revitalizing processes.

Congregations are also the ELCA. Bethel and other congregations are not lesser than synods or the churchwide expressions of the ELCA. In fact, the other two expressions "walk the road" of ministry with congregations who are the "boots on the ground" of the mission and ministry of Jesus Christ. Congregations send voting members to synod and churchwide assemblies to guide the direction of the church. These voting members bring resolutions and memorials to their synod assemblies, and some of those are carried forward to churchwide assemblies.

Much like our congregation council, there are synod councils made up of people from around each synod, as well as a churchwide council comprised of people from all over the country. And, like congregations, there are committees in each expression who work on things like updating constitutions, crafting social statements, and helping us interact with other church bodies in the United States and around the world.



**WHERE TO FIND
IT IN THIS
MONTH'S
BETHEL
BELL**

**Pastor Lynne's
Message
pg 1`-2**

**Family Ministry
pg 3**

RSTC pg 4

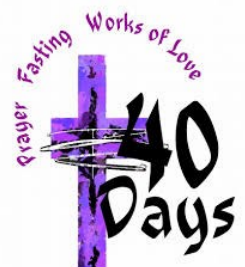
**Council Highlights
pg 5**

**Bethel Women
pg 6**

**News &
Reminders
pgs 7-14**

Bethel Lutheran Church Mission Statement

"We are called, enlightened and empowered through Christ
to worship, witness, and serve."



Pastor's page (contd.)

The ELCA is a part of the Lutheran World Federation, made up of Lutheran Church bodies from around the world. Each synod has companion synods in other parts of the world. The SWWA Synod is partnered with the Evangelical Lutheran Church in Namibia, the Evangelical Lutheran Church in the Republic of Namibia, and The German Lutheran Church.

The ELCA also has full-communion partners. These are Christian denominations in the U.S. with whom we hold a common confessing of the Christian faith and a mutual recognition of Baptism and sharing of the Lord's Supper. This does not mean we would merge with any of these denominations; rather, in reaching agreements, we also respect differences. These denominations worship together, may exchange clergy, and share a commitment to evangelism, witness, and service in the world. Each entity agrees that even with differences, there is nothing that is church-dividing. Our current full-communion partners are:

- Presbyterian USA
- Reformed Church in America
- United Church of Christ
- Episcopal Church
- Moravian Church
- United Methodist Church

On Sunday, June 11th, Bishop Rick Jaech will be at Bethel to preach and be in conversation with us. He will come at 9:00 for an adult forum, and I encourage you to bring your questions about the ELCA or the synod. Next month I will write about how our weekly offerings contribute to the ministry of the ELCA across all three expressions. Please let me know if you have other questions or topics about the ELCA that you would like addressed.

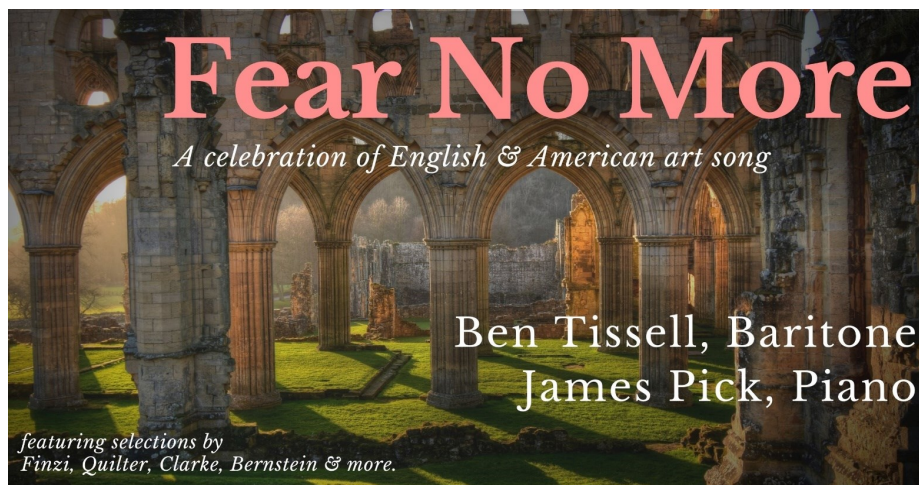
Grateful for our ministry together,
Pastor Lynne



Summer Concert Series at Bethel

This summer, Bethel will host three "summer" concerts open to the public, and we're kicking it off with a concert by our previous music director, James Pick and his friend Ben Tissell.

May 7, 2023 2:00pm



Whether you're a classical music fan or just looking to hear some good tunes, you won't want to miss this extraordinary concert featuring the works of Quilter, Finzi, Bernstein, Clarke, Copeland and others. Ben Tissell (Baritone) and James Pick (Piano) come together for their third recital celebrating English and American song. Powerful, evocative, and passionately performed, these works are sure to move, encourage, and delight audiences.

Invite your friends and neighbors for a delightful afternoon of good music, followed by a simple reception. Watch for details about future concerts, including one by the Battle Ground gospel singers, The Happy Accidentals!

FROM BONNIE STAUFFER:

MAY FAMILY MINISTRY

VBS UPDATE!

We are in need of a few more **Crew Leaders and Assistant Crew Leaders!** We are **thankful for Carolyn Bergren** saying yes to VBS serving as the **Music Station Leader!**

If you can not volunteer, but **would like to help us out with a donation**, you can **scan the QR Code below** on our VBS Wish List. The children love Imagination Station and other fun teaching tools! We welcome your donations for the supplies if you are able. **Thank you in advance!**



MAY 2023

VBS VOLUNTEER NEWS!

WE WANT TO GIVE A HUGE SHOUT OUT TO TARA MCCABE!

Tara has been hard at work making sure our VBS registration, publicity, and so much more have been ready to launch for our 4 day program, June 26-29!



Tara pays special attention to so many fun details and makes the VBS experience a joyful ministry for both the students and adults who attend and volunteer!

Thank you Tara For Letting Your Light Shine!



Our Family Ministry Mission Statement

To partner with families to reach and teach them in such a way that they have the greatest opportunity to become fully developed followers of Christ.

Deuteronomy 6:6-8

These words that I command you today shall be on your heart. You shall teach them diligently to your children, and you shall talk of them when you sit in your house, and when you walk by the way, and when you lie down, and when you rise.

SCAN THE CODE WITH YOUR PHONE CAMERA TO REGISTER YOUR STUDENTS FOR VBS OR TO VOLUNTEER!



Bonnie Stauffer

Family Ministry Director
blcfamily@bethelbrushprairie.org

VACATION BIBLE SCHOOL
Wish List!

SCAN THE CODE IF YOU WOULD LIKE TO MAKE A DONATION TOWARDS OUR VBS IMAGINATION STATION SUPPLIES!

THANK YOU FOR YOUR DONATIONS!





May Newsletter 2023

must purchase
tickets online!

TEENS TAKE OVER!

FRIDAY MAY 19TH
7PM - 10PM

ONLY \$5!

CHIEF UMTUCH MIDDLE SCHOOL
700 NW 9TH ST. BATTLE GROUND, WA

*NOT SPONSORED OR ENDORSED BY ANY CLARK COUNTY SCHOOL DISTRICT

GET YOUR TICKETS TODAY!
ROCKSOLID-TEEN.COM

THANK YOU TO OUR SPONSORS!

Amerigroup
VANCOUVER CLINIC
TRU
ROCKSOLID COMMUNITY TEEN CENTER
iQ 360.885.2181

MAKE A DIFFERENCE IN MAY!



May 1-15th

This campaign will be REPLACING GiveMore 24!

Donate online at rocksolid-teen.com

\$20 helps register one student for the school year! \$100 helps 5 students register!

Ukulele Lessons with Music World!



Support Rocksolid through Fred Meyer Community Rewards!



Thank you, Bethel, for giving us a home!

12919 NE 159th Street/PO Box 175 Brush Prairie, WA 98606
360-885-2181 | www.rocksolid-teen.com | Tax ID#36-4634695



Council Meeting Highlights – April 2023

Deacons are organizing a summer concert series. The first 2 events are scheduled:

- ◇ Sunday, May 7 at 2pm, pianist, James Pick, and vocalist, Ben Tissell, will be performing “Fear No More”, a celebration of English & American art song.
- ◇ Sunday, June 11 at 2pm, The Happy Accidentals will perform gospel music.

- Quarterly reports will be printed and distributed in members’ mailboxes. Any discrepancies should be forwarded to Chris Kast for investigation.
- A new security system, SimpliSafe has been installed. Keyholders have been trained and the system is actively monitoring events at the building.
- 2023 financial summary based on bank statements. o March: Deposits = \$24,177; Payments = \$29,611; Difference of \$-5,434
- YTD: Deposits = \$77,710; Payments = \$65,776; Difference of \$11,934

March shows payments higher than deposits, but we had multiple Portico payments. Did not make a payment in February so made multiple payments in March. YTD contributions are still ahead of expenses, and we are trending in the right direction

The full version of the Council Minutes is available in the office.

Sanctuary Committee Report

- Pastor Lynne introduced Dennis Goin from Mount Cross Lutheran Church (University Place, Washington) to present a method he is currently using as the Mount Cross Council President for their sanctuary update.
- Dennis Goin shared his method/process about implementing change that involves the congregation for input and implementation.
The Bethel Sanctuary Committee is enthusiastic about the guidance received and will be putting together a plan as we move forward in the coming weeks.



On May 7th Peter Vogelaar, from Lutheran Community Services North West, will be our guest speaker.

Come learn about the program and how they spread God’s love to our neighbors, locally and around the world.

April Quilting
Join one of the groups
in the fall.

Share House Quilters
2nd and 4th Monday
at 9am

Mission Quilters
2nd and 4th Tuesday
at 9am



Set-up for
Sunday Fellowship Hour
March - Hope Circle

Members of the Circle will set up the coffee for Sunday morning and schedule helpers for clean-up at the close of services.

All Bethel families are invited to help with food as well as serving & clean up.

You'll find a sign up sheet on the welcome desk.
Please help as you're able.

Someone you haven't seen lately?
Give them a call



Make their day!

May

Saturday, May 6th
Brunch Hostess - Hope Circle



Mother/Daughter Singers

Guest Speakers
Pastor Lynne - Vancouver Master Choral
Carol Van Matta - President, Vancouver Symphony

Share House Quilters:
Monday, May 8th & 22nd
Tuesday, May 9th & 23rd

Circles meet on Tuesday, May 16th at Bethel
Priscilla - 9:30am
Naomi - 1:00pm
Hope Circle - 6:30pm

Priscilla: Marlyne Olson, hostess
Naomi: Karen Robison, hostess
Hope: Candi Ehrich, hostess



Mother's Day
May 8th

Sunday Fellowship set up -
Hope Circle

THE HAPPY ACCIDENTALS
Concert - June 11th - 2pm



Mike Evan Luke
Michael Roy Jared

The Happy Accidentals is a men's Gospel Harmony group formed in 2020 that shares a love for The Lord and His gift of song. We praise Him with our voices for His goodness and salvation, and we love getting to share His good news through our music. When you listen to the Happy Accidentals, you'll hear rich harmonies and various genre styles ranging from Gospel to Big Band to Contemporary Christian with a couple a capella pieces. We all work, live and sing in the beautiful Pacific Northwest. In whatever way our music may affect you, may God be Glorified.

A letter from Gary Lindbo



Dear Pastor Ogren

Enclosed is a recently published book entitled "Lilly" for your consideration as an addition to your church library. It's a book which confirms the promise that "Nothing in all of creation, which we experience, will be able to separate us from the love of God in Christ Jesus our Lord."

"Lilly" tells of a life of danger, struggle, rejection, rescue and hope. It will, I think, be a helpful tool in your congregation's continuing ministry.

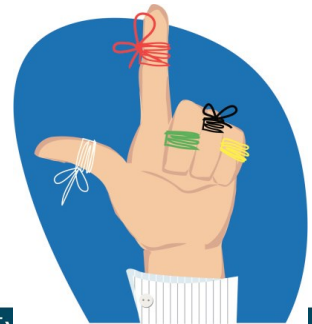
As you well know, Lilly has important ties to Bethel Lutheran and the area. She served and lived among you, very active in many ministries - especially as a youth leader, ladies circles and in forming various mixed Bible study fellowship groups. She was the wife of one of your former Pastors - Gary Lindbo.

The book will be helpful and appreciated by those who already know her as well as those who yet have to meet her in the book.

Many experiences and events from Bethel days are mentioned in this book. I too, have many good memories from my years among you at Bethel.

Gary Lindbo

MARK YOUR CALENDAR!



**WOMEN'S
BRUNCH
AND PROGRAM
10:00 AM
1ST SATURDAY OF
EACH MONTH**

Work Day Every Tuesday

MEN'S MINISTRIES

**Bethel Men are Invited
to Breakfast and Devotions
Third Saturday of Each Month
9:00AM**

**No Men's Breakfast in June, July, or August.
See you in September!**



Camp Lutherwood Oregon

Your family's summer vacation is already planned

What if the best family vacation was also the most affordable and the easiest to plan? Family & Friends Camp at Camp Lutherwood Oregon promises loads of fun and lifelong memories for all ages. Relax by the creek or cool off in the pool! Trained staff lead games and activities for toddlers, teens, and everyone in between. Adults-only time complements evenings all together around the campfire or gazing at the stars.

Book your spot now—there's only room for 14 families each session!

Register for Family Camp Session One: July 1-4

Register for Family Camp Session Two: July 21-23

Got a 2nd or 3rd grader? Capture their imagination!

This summer, elementary campers will have opportunities to be creative, explore the creek, sleep out, play games, splash in the pool, and make new friends at Camp Lutherwood Oregon. Staying in a cabin with peers and a trained counselor encourages important social skills, independence, confidence, and teamwork. Get your campers away from screens and plugged into WONDER in 2023!

Register for Session One: July 9-13

Register for Session Two: July 30-August 3

Note that ages listed in registration platform are for the 2023-24 school year.

www.lutherwoodoregon.org

Community Outreach Ministries

May 2023

Are you a gardener with no place to plant a garden?: Bethel has a few community garden plots still available. One is above ground and three are in the ground. There is a usage fee of \$15 per year which is a real bargain. You are welcome to check them out if you are interested. The above ground plot is #10 and is located south of the fountain. This one has some strawberries left by last year's gardener. You can keep or remove them. The three in ground plots are #15, #16 and #18. They are located in back parallel with the fence. For more information contact Judy in the church office or John Sarver at sarverj@centurylink.net

A blue square with the letters "VBS" in white, bold, sans-serif font.

VBS: Vacation Bible School needs a few more volunteers!. You don't have to do any planning- Bonnie has everything ready to go. You just need to show up, stay with a small group of kids and interact with them throughout the day at each station. It is a 4 day program, **June 26-29, 9:00 AM to noon.** See Bonnie for additional details



FAMILY PROMISE: Family Promise coordinators have recently been informed that the organization is losing both its executive director and program coordinator as well as the use of the building for its offices and day center at St. Thomas Aquinas Catholic Church in Camas. That said, **the board has decided to pause for a bit** until they get a new executive director and base of operations. Please keep the Family Promise board in your prayers as they work to find the right person for the executive director position.

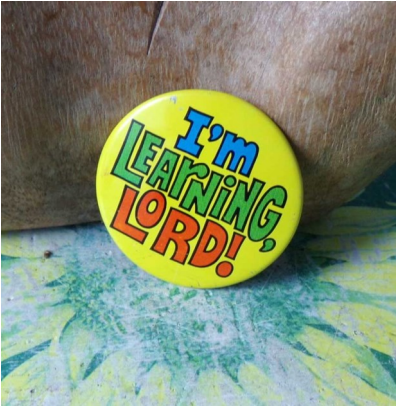
LUTHERAN COMMUNITY SERVICES NORTHWEST Lutheran community services partners with individuals, families and communities for health, justice and hope. They provide a pathway to a stable life for people facing devastating hardships. Thanks to the support of generous donors, they are helping people recover from mental health, trauma and addiction issues; supporting families beset by trauma and poverty; resettling and supporting refugees; finding foster homes for neglected children and working with families to keep at-risk teens from being removed from their homes; helping seniors and people with disabilities remain independent and standing up for victims of crime. For information on how you can help, go to <https://lcsnw.org/make-a-difference>

VOLUNTEER OPPORTUNITIES:

- Rocksolid Community Teen Center Volunteer
- Keeping In Touch Outreach Volunteer - Visits to the Homebound
- Help Maintain and Beautify Our Building, Property, and Grounds
- Make & Deliver Meals to Fellow Congregants in Need

This & That
from
Pat

I Am Learning Lord



My life has taken many falls and tumbles 'long the way. The many trials have left me in a sure state of dismay. For with each trial, I tried alone to tend, and soothe, and mend, instead of giving them to God - and on Him just depend... But I am learning, Lord.

It seems I was determined to carry all the load; I longed for smoother pathways yet I walked a rocky road. Little did I understand - God waited patiently to pave a new beginning with a better life for me... But I am learning, Lord.

It took a real disaster to bring me to my knees: to finally call upon the Lord and say, "God help me, please." He can, with no delaying, with strong arms that could hold - the weight of all my burdens: He gladly took the load... And I am learning, Lord.

What a needless cross I carried, all because I could not see - What a friend I have in Jesus, and the love He has for me. Peace I find when troubles hover, though the outcome is unknown, For if yet the road is rocky, I won't walk it all alone... For I am learning, Lord.



from Judy for all the fuss made over me on Administrative Professionals Day.. From cards and gifts to an in-person song delivery and more balloons than I could handle.. (but my great-grandson sure liked them!). Bethel is a wonderful family to belong to.. and I'm glad I do! Thanks again!



Do you enjoy receiving greetings from your Bethel family on special occasions?

Jody Huffstutler has worked on this program for several years but unfortunately needs to step back soon.

We're looking for someone to take her place. Time commitment is minimal and names - dates - occasions - and greeting cards are furnished!

Let the office know if you're interested in helping with this program.



And a Big Thank You to Jody !



Service in Action

And you are to love those who are foreigners, for you yourselves were foreigners in Egypt. [Deuteronomy 10:19](#)

LCSNW embodies this verse from Deuteronomy in how we care for “foreigners”. We provide affordable and empathetic guidance to those seeking refuge and pursuing legal immigration status. The definition of foreigner is a person not belonging to a particular place or group; a stranger or outsider. Haven’t we all felt like a foreigner at one point in time, or currently feel that way - as an outsider. We invite you to join us as we care for those who feel this way!

While LCSNW has a wide spectrum of services, one to highlight is our newly branded Safe Route Immigration program. Safe Route Immigration, a program of Lutheran Community Services Northwest, provides accessible legal services to refugees and immigrants in Portland, Beaverton, McMinnville, and Salem, Oregon, along with Vancouver, Tacoma, and Seattle, Washington. We’re committed to growing alongside our clients and have expanded our services over the past four decades to include immigrant rights advocacy, community education, and legal guidance for clients on their journey to becoming fully-integrated members of American society.

LCSNW Safe Route Immigration Program

By the Numbers:

5,000	Clients served last year
1500	Legal intake consultations
700	Citizenship applications submitted
643	Green cards received
420	Family Reunifications
300	DACA (Dreamer) renewals completed
300	Green card renewals completed
74	Victim Protections awarded
46	Asylum cases granted



**CSB Reunion
August 3-5, 2023**

Grab your fishing pole, pack your hiking boots, bring your family to join in the fun, and get ready for a full weekend of adventure and catching up with old friends at the CSB 6610 reunion this summer.

Bethel will be the base for all activities, which begin at 9:00 on Thursday morning. A day of fishing is planned at a prime location east of Cougar. Explore 81 acres of mature forest and open meadows on easy to moderate trails in the Salmon-Morgan Creeks Natural Area on Friday. The three-day event will culminate on Saturday, August 5, at 5:00 with a wrap-up dinner and evening program at Bethel.

For planning purposes, please RSVP to John Johnson at jjemail@copper.net or by phone/text at 360-909-4405.



Musician Position Open: Worship Pianist

Bethel Lutheran Church

PO Box 175 12919 NE 159th St. Brush Prairie, WA 98606

Office: 360-892-4231 blcoffice@bethelbrushprairie.org

Bethel Lutheran Church is seeking an experienced pianist to lead congregational singing for worship, 2-3 Sundays per month, Contact the church office for a complete job description and application information.



Join us In person:
for Worship at 10:00am on Sunday mornings
on line: follow the links from our website
bethelbrushprairie.org
or on the Phone Patch: 360-729-0011
Put your phone on speaker
and don't forget to hit the mute button...



Masks are welcome, but optional, according to your comfort level

Worship Assistants Schedule for May 2023

	Worship Asst	Reader	Greeter	Usher
May 7	Heidi DeBroeck	Ron Gullickson	Marlyne Olson Maureen Smith	Ron Gullickson Dick Wolf
May 14	Charles Moon	David Fleming	Nanci Keenan Jon Bradley	Ken Saylor Larry Kytola
May 21	Heidi DeBroeck	Rick Hauser	Claudia Bottemiller Kay Nock	Dennis Stauffer Neal Correy
May 28	Heidi DeBroeck	Randy Crawley	Chad McCabe Tara McCabe	Jim Fuerstenberg Ray Sell



Got some important Bethel news? You can send updates, or get information to us by e-mailing:



Today we ask for prayer for Judy Sutera, Anne Hultsman, Milt Kleven, Jody Huffstutler, Lucille Gukeisen, Denneva Coats, Sheryl Elder and Laurie Haynes

We pray for the financial & spiritual health & growth of Bethel and for all who struggle with illness and economic issues. We ask God's guidance and protection on our military, our leaders and our country.

Parish Admin: Judy Wood
blcoffice@bethelbrushprairie.org

Pastor: Lynne Ogren
blcpastor@bethelbrushprairie.org

Director of Family Ministries
Bonnie Stauffer
blcfamily@bethelbrushprairie.org

A/V Ministry: Jim Bergren
blcav@bethelbrushprairie.org

RSTC Director
Marcy Sprecher
Marcy@rocksolid-teen.com

visit us on the web at
bethelbrushprairie.org



Thank you Bethel for your continued financial support.

Have you considered setting up automatic giving through your bank or credit union? It's usually done at no charge.

Masks are now optional at Bethel. Wear or not - according to your own comfort level.

Stay well!



April 2023
Bethel Bell
Newsletter Articles
are due by Feb24th
Office hours:
Regular hours
Mon-Fri 9AM-3:30PM

Please call if you have questions.
Office: 360-892-4231

"pray without Ceasing"
1 Thessalonians 5:17



"Always pray and never give up"
Luke 18:1

Are you a part of Bethel's Prayer Chain?

If not, and you'd like to be, please contact Judy Bergren (phone chain) 360- 666-9134 or Judy Wood (email chain) 360-892-4231 or 360-904-0271. All we need is your name and email address, or your phone number if you don't use a computer...

Communion April 2023



Communion will be served to those who attend in-person services at Bethel this month.

Communion elements for home use are available at the Bethel office. Call and arrange to come and pick yours up.



Charles Moon	05/05
Brandon Correy	05/06
Joseph Shields	05/10
Rocky Smith	05/14
Robert Davis	05/16
Dan Lindberg	05/19
Dean Sutera	05/20
Chad McCabe	05/26
Garrett Moon	05/29
Jaren Bergren	05/29
Cindi Schroeder	05/30
Jenna Bergren	05/30

Robert & Jennifer Huffstutler 05/11/2013

If you had a birthday or anniversary and are not listed, OR if dates are incorrect or incomplete,



Keep our Servicemen and women in your prayers..

SPC Alec Rohrer, US Army, grandson of Jack & Cindi Graves, serving at Fort Carson, Co.

Johnathan Cook, USAF , grandson of Kay Nock, stationed in Florida

Zackery Scott Noorlun, USAF, TSgt , great-grandson of Clarice Noorlun, serving as an avionics technician at Royal Air Force Lakenheath in the UK.

Ingrid Flores, E-4 US Combat Medic, who returned safely in July 2020 from a year of service in Jordan. Great niece of Craig and Candi Ehrich, who continues to serve with the Army National Guard.

Nick Otos, USAF, nephew of Kari Otos, stationed at Okinawa, Japan

Luke Terry - US Air Force, stationed in Germany.

Lonnie Terry - US Air Force, stationed in New Mexico.

Derrick Wolf, USN, grandson of Dick & Charlene Wolf. Derrick is on recruiting duty in Virginia.

Chandler Heppe, USAF, Capt, nephew of Eric & Lynne Ogren, stationed in Utah.

Regan Heppe, USAF, Lt. niece of Eric and Lynne Ogren, stationed in Mississippi

A soldier said: "When I die do not play taps over my grave. Instead play reveille, the morning call, the summons to arise."

If you have an update for this list, please let the office know.. Thanks!

Bethel Lutheran Church
12919 NE 159th St
PO Box 175
Brush Prairie, WA 98606



Christ Welcomes All

Stay Informed....

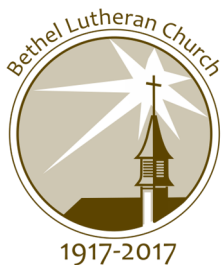
There are many ways for you to keep up with what's going on here at Bethel..
You may visit us **on the web** at www.bethelbrushprairie.org

Like us on Facebook! Click the LIKE button to stay on top of all the
current news and photos! www.facebook.com/bethelfamilyministry

You can also follow Bethel on:

Pinterest <https://www.pinterest.com/bethelblessings/> and

Instagram <https://www.instagram.com/blcfamily/>



**If you're unable to join us in-person please
won't you join us virtually??**

Sunday Service Hours

In-person 10:00am

Streaming Service - YouTube

Phone patch - 360-729-0011

**Watch the Bethel Bell and the Mid-Week (on line)
for Coming Events!**