

The Bethel Bell



January 2023

Phone: (360) 892-4231

[Click to Visit our Website](#)

Volume 30, Issue 1

email: blcoffice@bethelbrushprairie.org

Bethel Bell February 2023

Pastor's Page

"Seeing is believing!" the saying goes. We are such visual learners, but seeing is not always about how well our eyes function. "I see!" might mean, "I understand!" But we can resist new understandings about ourselves or others or even about God. We know what we know, based on our own experiences and relationships. Seeing through the eyes of others, or through the eyes of God takes a willingness on our part to set aside one viewpoint to learn from another.

We will soon begin the season of Lent that will open our eyes to see in ways that also open our hearts to believing in the amazing love and goodness of God, brought near in Jesus the Christ.

As always, we will begin the season with Ash Wednesday worship on February 22 at 7pm, when our eyes are opened to see ourselves with honesty about the sin that can so easily overwhelm us. We will turn our attention to the faith practices that keep our eyes and hearts on God.

In the Sundays of Lent we will hear stories of those who learn to see with eyes of faith in new ways.

Jesus will see the temptations that haunt humanity as he begins his ministry of reconciling the world to God.

Nicodemus will see the saving path that comes with being born of the Spirit.

The woman at the well will learn how God sees her in the light of grace.

A man born blind will see the world in new ways, both physically and through the lens of Jesus' love for him.

And Lazarus will be raised from the dead, helping us see the promise of life that follows death.

Jesus invited us to "come and see" him at the beginning of the Sundays after Epiphany. Come and see what he has to teach. Come and see God's healing power. Come and see that we each have a place in the kingdom of heaven.

Then in Lent, let us open ourselves up to the new ways of seeing through the eyes of faith in the One who brings sight and possibility and hope to the world.

In joy,

Pastor Lynne

WHERE TO FIND IT IN THIS MONTH'S BETHEL BELL

Pastor Lynne's
Message
pg 1

Family Ministry
pg 2

RSTC pg 3

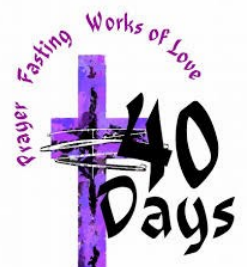
Council Report
pg 5-6

Bethel Women
pg 7

News &
Reminders
pgs 8-12

Bethel Lutheran Church Mission Statement

"We are called, enlightened and empowered through Christ
to worship, witness, and serve."



FROM BONNIE STAUFFER:

FEBRUARY FAMILY MINISTRY

SOUPER BOWL OF CARING

When we all come together to help people, we can make really good things happen.

The children in Sunday school want to ask each of you to help us. On Super Bowl Sunday, February 12, please remember to bring food donations to church (see their needs list). We will collect all the donations and deliver it to the North County Food Bank to help people who are in need here in our community. Remember, we can make a big difference when we all come together to help.

The Souper Bowl of Caring, that is S O U P E R Bowl of Caring is very special for two reasons. Number one-it helps people who are hungry. Jesus calls us to help

people in need. Number two is that the Souper Bowl of Caring was started by and is led by youth. Every Super Bowl Sunday youth across the entire country ask people in their church to bring food donations to church to give to people who are hungry.

So come join the movement called the Souper Bowl of Caring on February 12 at 10:00 AM. We will have a friendly competition with your food donations. Place your donations in the baskets for your favorite Super Bowl team. All donations will be given to the North County Food Bank.

Bonnie Stauffer

Family Ministry Director
blcfamily@bethelbrushprairie.org



Our Family Ministry Mission Statement

To partner with families to reach and teach them in such a way that they have the greatest opportunity to become fully developed followers of Christ.

Deuteronomy 6:6-8

These words that I command you today shall be on your heart. You shall teach them diligently to your children, and you shall talk of them when you sit in your house, and when you walk by the way, and when you lie down, and when you rise.

Scan the QR Code from your phone camera to keep up to date with all the latest news on our website. You can also access the church calendar from there.



SOUPER BOWL OF CARING FEBRUARY 12 AT 10:00 AM

Most Wanted Foods

- | | |
|----------------------|------------------------|
| PEANUT BUTTER | CANNED MEAT |
| COOKING OIL | MACARONI |
| CANNED/DRIED BEANS | CANNED SOUP/BROTH |
| CANNED FRUIT/VEGGIES | CANNED TOMATO PRODUCTS |
| SHELF-STABLE MILK | SPICES/SOUCES |

TO ENSURE FOOD SAFETY WE CANNOT USE:

- | | |
|---|---|
| ALCOHOLIC BEVERAGES,
MIXERS, OR SODA | NONCOMMERCIAL CANNED
OR PACKAGED ITEMS |
| RUSTY OR UNLABELED CANS | PERISHABLE ITEMS |
| HOMEMADE ITEMS | OPEN OR USED ITEMS |





February Newsletter 2023

For the of youth!



Lucky Shamrock Auction

when:
Saturday, March 11, 2023
Doors open at 5 pm - 10 pm
Silent Auction, March 8 - 13

where:
ilani Casino Resort
1 Cowlitz Way
Ridgefield, WA 98642

tickets at:
rocksolid-teen.com

more information:
360.885.2181

Presenting Sponsor:



Pot of Gold Sponsors:



Emerald



Luck of the Irish:



Community Leaders Day was FUN!



MENTOR
WASHINGTON



Thank you, Bethel, for giving us a home!

12919 NE 159th Street/PO Box 175 Brush Prairie, WA 98606
360-885-2181 | www.rocksolid-teen.com | Tax ID#36-4634695

Community Outreach Ministries

February 2023

SUPER BOWL OF CARING: In 1990 Souper Bowl of Caring began with a simple prayer from a single youth group: “Lord, even as we enjoy the Super Bowl football game, help us be mindful of those without a bowl of soup to eat.” Join the youth of Bethel as they collect food donations on Sunday, February 12th to benefit the North County Food Bank in Battle Ground.

Most wanted foods include peanut butter, cooking oil, canned/dried beans, fruits/vegetables, shelf-stable milk, canned meats, macaroni, soup/broth, canned tomato products, and spices/sauces. **NO** alcoholic beverages, mixers or sodas, rusty or unlabeled cans, homemade items, non-commercial canned or packaged items, perishable items, or open or used items.

Last year was a big success. Let’s make this year even better!!

JUST ONE THING BATTLE GROUND: Just One Thing Battle Ground is an all volunteer community coalition that believes all of us are better off when we work together to help one another. Just One Thing Battle Ground coordinates with members and local resources to facilitate help with immediate survival needs while supporting long term goals of the homeless. For more information or to volunteer call 360-687-5007

FRIENDS OF THE CARPENTER: Friends of the Carpenter is a non-profit, faith-based day facility that provides safety, structure and purpose for vulnerable members of our community. A wide range of volunteer opportunities provide creative and constructive options for meaningful interactions. Donations undergird the mission and operation of the ministry. Gifts of time, talent and treasure are gratefully received. Contact them at 360-750-4752.

Looking for tools? Friends of the Carpenter holds a monthly tool sale every 3rd Friday (10 to 3:00 pm) and Saturday (10 to 2:00 pm) at 1600 W 20th Street, Vancouver. A wide variety of tools are available including hand tools, lathes, table saws, shop saws, jointers, band saws, drill presses and much more. Also, Tool Donations are greatly appreciated.

VOLUNTEER OPPORTUNITIES:

- Rocksolid Community Teen Center Volunteer
- Provide Meals for Family Promise Outreach
- Early Evening Host for Family Promise
- Overnight Host for Family Promise
- Keeping In Touch Outreach Volunteer - Visits to the Homebound
- Deliver Food to the North County Food Bank when we have seasonal collections at Bethel
- Help Maintain and Beautify Our Building, Property, and Grounds
- Make & Deliver Meals to Fellow Congregants in Need

CARE KITS:

Pick up a plastic bag from the welcome desk to keep in your car to give to someone you encounter who is in need.

This & That
from
Pat



We have yet another opportunity to serve families at Battle Ground United Methodist.

Later in February, there will be a SignUp Genius link made available to us to choose how we might serve:

- ♥ Make a meal for 15 or fewer guests
- ♥ Host the early evening hours (5 to 9 p.m.)
- ♥ Serve as overnight hosts (9 p.m. to 7 a.m.)

Overnight hosts should bring their own pillow and bedding for a comfortable evening (cots provided).



Early morning and evening shifts for van drivers are also available for drivers under age 75. No special endorsement is needed to drive the vehicle.

If you are interested in any of these volunteer opportunities, please contact Candi Ehrich at 360-521-6209 or by email at candi-ehrich@comcast.net for more information.



GENEROUS BEYOND MEASURE!

Our **Babies In Need** cradle was overflowing with items too numerous to list—everything from sleepers, onesies and sleep sacks to handmade sweaters, hats burp cloths and receiving blankets. Two new car seats were donated in addition to the \$681 given so the organization can purchase more as they need them. There were socks, diapers, wipes, bathtime essentials, bibs, a thermometer, the cuddliest bear ever hugged and many other wonderful gifts. Thank you for giving from your hearts to provide for little ones in our community who might otherwise go without some of these items that bring comfort and love into their lives.

*Serving Needy Newborns
In Southwest Washington*

Board of Directors

Jacquelin Smith, MD *Chair*
Marguerite Matusak, SW *Vice-Chair*
Patricia Stephens *Secretary/Treasurer*
Robert Ash
Clare Imel
Gretchen Niemi
Mona Pocha
Vicki Setzer
The Rev. Joe Scheeler, *ex officio*

Kitty Ash, Executive Director

KittyAsh2@msn.com

360-901-7474

Mona Pocha, Associate Director,
Diaper Bank Manager

MonaPocha@gmail.com

406-439-6694

Babies in Need

PO Box 1441
(2206 NW 99th Street)
Vancouver, WA 98668
Phone: 360-573-8106
www.babiesinneed.org

A Ministry of
All Saints Episcopal Church

(2206 NW 99th Street)
PO Box 1441
Vancouver, WA 98668

Phone: 360-573-8106
admin@allsaints-vancouver.org
www.allsaints-vancouver.org

Non-profit TIN #91-1049465

Benefactors
PeaceHealth SW Medical Center
Hatton GIBO Charitable Fund

*We are an all-volunteer non-
profit organization support-
ed by generous, loving people
in
Vancouver and beyond*

January 25, 2022

Bethel Lutheran Church Family
P.O. Box 175
Brush Prairie, WA 98606

Dear Friends at Bethel,

Our volunteer sorters gathered around your donations the other day and were deeply moved by your outpouring of love and generosity! Thank you for all the beautiful gifts for babies in need in our community. Carefully selected and lovingly made, they covered two long tables, piled high. The nice clothes, hand knit sweaters and hats, blankets, burp cloths, washcloths, colorful books, soft toys, and wonderful extras are already finding their way to families. They delight parents and bless newborn babies.

Your diapers, wipes, ointments and baby wash went right to our diaper bank where they were given out within a week. You knew just what was needed. In the first 12 months, we have gone from serving 56 children a month to 237 and have provided 113,341 diapers!

Thank you for the car seats! One went to a Ukrainian widow with six young children. When she arrived at our diaper bank, we learned that her youngest didn't have a car seat. She was astounded and grateful when we offered it to her. What a blessing! Your \$681 will buy more car seats and booster seats for families like hers.

It has been a joy to serve God's children with you for many years! Thank you for all the blessings you provide to parents and children in our community. You give hope and help when it is most needed.

Love from all of us at Babies in Need to each one of you.

Kitty

Kitty Ash
Executive Director
Babies in Need





Council Meeting Highlights - January 2023

Board Vice-Presidents for 2023 confirmed as follows:

- o Deacons: Candi Ehrich
- o Education: Val Moon
- o Trustees: Jack Graves

One of the pianists recently resigned after finding a position closer to home. We will be posting soon to find someone to fill our part-time pianist / choir / bells position.

There are many opportunities for members to be involved. If you or someone you know is interested in volunteering for one of the following positions or committees, please contact a council member: Open positions on the Council, Sanctuary Committee, Memorial Fund Committee, Financial Review Committee

Financial update:

December: Deposits = \$31,946;
 Payments = \$18,015;
 Difference of \$13,931



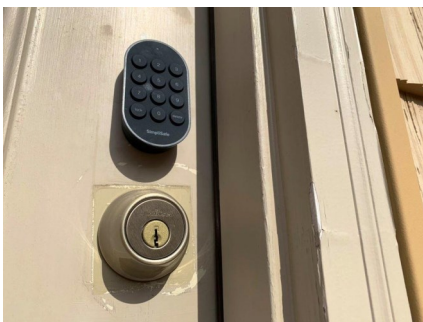
YTD**:

Deposits = \$358,510;
 Payments = \$351,754;
 Difference of \$6,756

**YTD summary includes the expenses related to new heating / cooling system



NEW SECURITY PROGRAM COMING TO BETHEL SOON



Bethel's building will soon have a security alarm system. Once the system is installed all keyholders to the building will need to come to the office to receive a PIN code to arm/disarm the system and hands-on training. When all keyholders are accounted for, the security system will be activated.

Terry Smith will be conducting a training class.

Please contact him with any questions and to set up a time.
 (cell) 360-798-0816

Shrove Tuesday

FEBRUARY 21

6:00 PM



SHROVE TUESDAY, FEBRUARY 21

Shrove Tuesday is a day that's celebrated by many Christians around the world before the start of Lent. That's the six-week period that leads up to Easter.

The word **shrove** is the past tense of **shrive**, which means to **confess**.

In the Middle Ages, this day was a time for people to confess their sins and ask for forgiveness. This allowed Christians to enter into the season of Lent and prepare for Easter with a clean spirit.

Long ago, after people went to church to confess their sins on Shrove Tuesday, they often returned home to have a

feast. One of the dishes that was often made was pancakes. And that tradition has continued to this day. Some people make rolled-up paper-thin pancakes called **crêpes** with yummy fillings.

Please join us for a Shrove Tuesday Pancake Supper on Tuesday, February 21 at 6:00 PM



WE BEGIN OUR 40 DAY JOURNEY THROUGH LENT ON ASH WEDNESDAY

Lent begins on Ash Wednesday. On this day we remember that we are dust and to dust we will return. The season of Lent is an important time for Christians to reflect on how God has been active in our lives and how God continues to

help us grow.

**Please join us for Ash Wednesday
on Wednesday, February 22 at 7:00 PM**

One more bell ringer needed!

We have just enough bell ringers, but we could use a sub who would be willing to fill in during rehearsals for various bell ringers who can't be there. Being able to sight read music would be a benefit. Bell choir practices Wed. nights at 6pm. There is no soup supper nor vocal choir at this time. It is our hope to play the bells on Easter Sunday.

If interested, contact Nanci Keenan
360-666-1269 or join us on Wed. at 6pm.



February Quilting
Join one of the groups
in the fall.

Share House Quilters
2nd and 4th Monday
at 9am

Mission Quilters
2nd and 4th Tuesday
at 9am



Set-up for
Sunday Fellowship Hour
February - Hope Circle

Members of the Circle will set up the coffee for Sunday morning and schedule helpers for clean-up at the close of services.

All Bethel families are invited to help with food as well as serving & clean up.

You'll find a sign up sheet on the welcome desk.
Please help as you're able.

Someone you haven't seen lately?
Give them a call.

Wish them Happy Valentine's Day!

Make their day!



BLCW Brunch
February 4th at 10am
Hostess: Hope Circle

Our Guest Speaker
Adam Kravitz,
Executive Director
Outsiders Inn Program
which extends the WHO
shelter at St Paul
into the spring, summer,
and fall months

Learn about opportunities at Share House
and St. Paul Men's Shelter

Potluck Brunch
Please bring your favorite breakfast casse-
role, fruit, bread or pastry.

Ask a friend to join us!

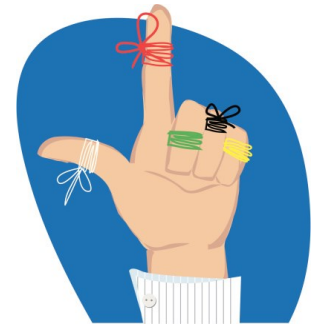
Circles meet on Tuesday, Feb 14th, at Bethel
Priscilla - 9:30am - Naomi - 1:00pm
Hope Circle - 6:30pm

Priscilla: Judy Wood, hostess
Naomi: Val Moon, hostess
Hope: Joy Frahm, hostess



Women's Bible Study

MARK YOUR CALENDAR!



Work Day Every Tuesday

**MEN'S
MINISTRIES**

**Bethel Men are Invited
to Breakfast and Devotions
Third Saturday of Each Month
9:00AM**

Pastor Lynne's Bible Study

**Join us on
Wednesday
at 10am**



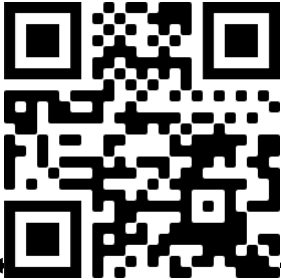
**We're studying the book
of Psalms**

Musician Position Open: Worship Pianist and Choir Director

Bethel Lutheran Church

PO Box 175 12919 NE 159th St.
 Brush Prairie, WA 98606
 Office: 360-892-4231 blcoffice@bethelbrushprairie.org

Bethel Lutheran Church is seeking an experienced pianist to lead congregational singing for worship, 2-3 Sundays per month, who can also direct a small vocal choir and a handbell choir. Contact the church office for a complete job description and application information.



Join us In person:
 for Worship at 10:00am on Sunday mornings
 on line: follow the links from our website
 bethelbrushprairie.org
 or on the Phone Patch: 360-729-0011
 Put your phone on speaker
 and don't forget to hit the mute button...



Masks are welcome, but optional, according to your comfort level

Worship Assistants Schedule for February 2023

	Worship Asst	Reader	Greeter	Usher
Feb 5	Ken Sayler	Ray Sell	Geni Hammer Maureen Smith	Terry Smith Dick Wolf
Feb 12	Eric Ogren	Souper Bowl of Caring	Jon Bradley Nanci Keenan	Souper Bowl of Caring
Feb 19	Terry Smith	Rick Hauser	Claudia Bottemiller Kay Nock	Neal Correy Dennis Stauffer
Feb 26	Charles Moon	Randy Crawley	Chad McCabe Tara McCabe	Jim Fuerstenberg Ray Sell



Got some important Bethel news? You can send updates, or get information to us by e-mailing:



Today we ask for prayer for Judy Sutera, Sandi Kytola, Milt Kleven, Jody Huffstutler, Lucille Gukens, Denneva Coats, Sheryl Elder and Laurie Haynes

We pray for the financial & spiritual health & growth of Bethel and for all who struggle with illness and economic issues. We ask God's guidance and protection on our military, our leaders and our country.

Parish Admin: Judy Wood
blcoffice@bethelbrushprairie.org

Pastor: Lynne Ogren
blcpastor@bethelbrushprairie.org

Director of Family Ministries
Bonnie Stauffer
blcfamily@bethelbrushprairie.org

A/V Ministry: Jim Bergren
blcav@bethelbrushprairie.org

RSTC Director
Marcy Sprecher
Marcy@rocksolid-teen.com

visit us on the web at
bethelbrushprairie.org



Thank you Bethel for your continued financial support.

Have you considered setting up automatic giving through your bank or credit union? It's usually done at no charge.

Masks are now optional at Bethel. Wear or not - according to your own comfort level.

Stay well!



March 2023
Bethel Bell
Newsletter Articles
are due by Feb. 20th

Office hours:
Regular hours
Mon-Fri 9AM-3:30PM

Please call if you have questions.
Office: 360-892-4231

"pray without Ceasing"
1 Thessalonians 5:17



"Always pray and never give up"
Luke 18:1

Are you a part of Bethel's Prayer Chain?

If not, and you'd like to be, please contact Judy Bergren (phone chain) 360- 666-9134 or Judy Wood (email chain) 360-892-4231 or 360-904-0271. All we need is your name and email address, or your phone number if you don't use a computer...

Communion January 2023



Communion will be served to those who attend in-person services at Bethel this month.

Communion elements for home use are available at the Bethel office. Call and arrange to come and pick yours up.



Lori Kytola	02/03
Joy Frahm	02/06
Lori Lindberg	02/06
Laura Simmons	02/09
Joyce Detchman	02/10
Sally Aalbue	02/15
Valerie Moon	02/19
Nancy Fuerstenberg	02/19
Gloria Johnson	02/19
Judith (Judy) Wood	02/20
David Fleming	02/25
Sharon Stokke	02/26
Heidi DeBroeck	02/27

Bob & Dottie Davis	02/08/1976
Gordon & Claudia Bottemiller	02/08/1974

If you had a birthday or anniversary and are not listed, OR if dates are incorrect or incomplete,



Keep our Servicemen and women in your prayers..

SPC Alec Rohrer, US Army, grandson of Jack & Cindi Graves, serving at Fort Carson, Co.

Johnathan Cook, USAF , grandson of Kay Nock, stationed in Florida

Chief Petty Officer, Ryan Fontenot, stationed Texas. Grandson of Milt and Jan Kleven.

Brandon Morgan, USAF Sp. Forces Para rescue, grandson of Milt & Jan Kleven, stationed in Tucson, AZ

Zackery Scott Noorlun, USAF, TSgt , great-grandson of Clarice Noorlun, serving as an avionics technician at Royal Air Force Lakenheath in the UK.

Ingrid Flores, E-4 US Combat Medic, who returned safely in July 2020 from a year of service in Jordan. Great niece of Craig and Candi Ehrich, who continues to serve with the Army National Guard.

Nick Otos, USAF, nephew of Kari Otos, stationed at Okinawa, Japan

Luke Terry - US Air Force, stationed in Germany.

Lonnie Terry - US Air Force, stationed in New Mexico.

Derrick Wolf, USN, grandson of Dick & Charlene Wolf. Derrick is on recruiting duty in Virginia.

Chandler Heppe, USAF, Capt, nephew of Eric & Lynne Ogren, stationed in Utah.

Regan Heppe, USAF, Lt. niece of Eric and Lynne Ogren, stationed in Mississippi

A soldier said: "When I die do not play taps over my grave. Instead play reveille, the morning call, the summons to arise."

If you have an update for this list, please let the office know.. Thanks!

Bethel Lutheran Church
12919 NE 159th St
PO Box 175
Brush Prairie, WA 98606



Christ Welcomes All

Stay Informed....

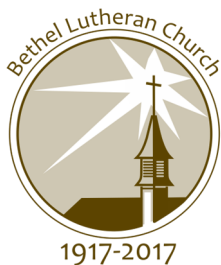
There are many ways for you to keep up with what's going on here at Bethel..
You may visit us **on the web** at www.bethelbrushprairie.org

Like us on Facebook! Click the LIKE button to stay on top of all the
current news and photos! www.facebook.com/bethelfamilyministry

You can also follow Bethel on:

Pinterest <https://www.pinterest.com/bethelblessings/> and

Instagram <https://www.instagram.com/blcfamily/>



**If you're unable to join us in-person please
won't you join us virtually??**

Sunday Service Hours

In-person 10:00am

Streaming Service - YouTube

Phone patch - 360-729-0011

**Watch the Bethel Bell and the Mid-Week (on line)
for Coming Events!**