

# The Bethel Bell



**D**January 2023

Phone: (360) 892-4231

[Click to Visit our Website](#)

Volume 30, Issue 1

email: [blcoffice@bethelbrushprairie.org](mailto:blcoffice@bethelbrushprairie.org)

## Pastor's Page

There were a couple of good movies made last year about the life and music of Aretha Franklin, The Queen of Soul. Aretha grew up singing the gospel music of the African American Southern church in the '40's. She was able to carry that style into the popular music of the 50's and 60's, creating her own sound that shot her to the top of the charts.

As time went on and music styles changed, Aretha's agent wanted her to sing some of the disco music coming out in the '70's. At first, she refused. That was not her style, and she wouldn't consider changing who she was to accommodate a passing fad. But, as sales of her albums dropped, she finally realized she needed to adapt or become a voice of the past.

Aretha learned to sing some of the disco-style songs, with her own voice and creative style. She is even famous for filling in at a concert on an opera piece, a style even more different than anything she had done before. Aretha Franklin remained the Queen of Soul throughout her career, because she learned how to adapt to new audiences and styles over her lifetime.

Churches need to do the same. At our annual meeting in December, we shared some of the dreams and ideas the council came up with over the summer, one of which was refreshing the sanctuary. This part of our facility is the oldest, and yet it does not look like it did when it was first built.

The entrance has changed. The bell tower was removed. Some of you remember digging out the basement, which once welcomed people to potlucks and wedding and funeral receptions and now serves as a safe haven for teens. It is time once again to update the space, and what that will ultimately look like is yet to be seen.

What we need to keep in mind is who will be worshipping here in the next ten to twenty to thirty years. Many will not be those who grew up or raised their children at Bethel. They will be the ones who are drawn here by our invitation to them. They will stay because of the warm welcome they receive both by us and by the love of God that envelopes them in the Word and the sacraments and the fellowship of believers.

There was a time when the founding families of Bethel could not imagine worshipping in English rather than Norwegian. But they adapted because of the changing culture. We have adapted in other ways over the years. We have an amazing facility with the gym, a welcoming office and fellowship area, and beautiful grounds. Our audio/video capabilities set us in a good position for reaching out with the message of God's love and grace in new and creative ways. We will continue to adapt, while keeping the voice of the Gospel of Jesus Christ at the core of who we are and how we minister to the world.

As we form the working team to examine our options for the sanctuary, let us look beyond our individual tastes and consider what will serve the worship of God and the welcome of our neighbors. This will be a clearly communicated process that will be carried out with thoughtfulness and the guidance of the Holy Spirit. In the meantime, as we journey through this transition, let us keep our mission in front of us as a church who is called, enlightened, and empowered through Christ to worship, witness, and serve.

I am grateful to serve among you in this place.

Pastor Lynne

## **WHERE TO FIND IT IN THIS MONTH'S BETHEL BELL**

**Pastor Lynne's  
Message  
pg 1**

**Family Ministry  
pg 2**

**RSTC pg 3**

**Council Report  
pg 5-6**

**Bethel Women  
pg 7**

**News &  
Reminders  
pgs 8-12**

**Bethel Lutheran Church Mission Statement**

**"We are called, enlightened and empowered through Christ  
to worship, witness, and serve."**



FROM BONNIE STAUFFER:

## JANUARY FAMILY MINISTRY

### Joy in January - Happy New Year Bethel Family!

Have you ever felt like Alice (in Wonderland) when she woke up somewhere strange? Sometimes we have days like that. There are days we have trials and there are days we have heartache, so we try our best to remind ourselves who walks with us through those times. We have God and we have each other! My family and I are so thankful for the Bethel family and the opportunity to walk with each other through good times as well as the days that we feel like we woke up in a strange place. Let's help each other know that God cares and is always there for us with His love and peace. God already knows what is happening on our walk through life and when we have a personal relationship with Christ, He will hear our prayers because He

knows us. He will listen. I pray the New Year will bring each of you peace and hope and that you can find joy through His word. Happy New Year!

Being filled with the joy of scripture in the midst of January after all the celebrations of Christmas are over, can help keep our minds stress-free.

Here a few scripture readings to help you find joy in January!

- ⇒ Romans 15:13
- ⇒ Isaiah 26:3
- ⇒ Psalm 16:11
- ⇒ James 1:2
- ⇒ Psalm 19:8

*Bonnie Stauffer*

Family Ministry Director  
blcfamily@bethelbrushprairie.org



### Our Family Ministry Mission Statement

To partner with families to reach and teach them in such a way that they have the greatest opportunity to become fully developed followers of Christ.

#### Deuteronomy 6:6-8

*These words that I command you today shall be on your heart. You shall teach them diligently to your children, and you shall talk of them when you sit in your house, and when you walk by the way, and when you lie down, and when you rise.*

Scan the QR Code from your phone camera to keep up to date with all the latest news on our website. You can also access the church calendar from there.



### Souper Bowl of Caring Coming Soon!

In 1990, Souper Bowl of Caring began with a simple prayer from a single youth group:

**“Lord, even as we enjoy the Super Bowl football game, help us be mindful of those without a bowl of soup to eat.”**

Since then, more than \$170 million has been generated for local charities across the country through Souper Bowl of Caring. It has become a powerful movement that transforms the time around the Big Game into the nation's largest celebration of giving and caring for those in need.

Through this mission, people learn they can make a positive difference in the world as they collect food, raise money and serve at hunger-relief charities and show caring and compassion in local communities across the country.

Share in God's love on Feb 12 at 10:00 AM for our neighbors in need as we give generously on Souper Bowl Sunday. All of the donations collected will go directly to our Tackle Hunger Charity of Choice, The North County Food Bank.



### Sunday School Schedule:

**JAN 1—NO CLASS**

**JAN 8—9:00 AM Class and Pancake Breakfast after worship**

**JAN 15—9:00 AM Class**

**JAN 22—9:00 AM Class/prepare for Souper Bowl of Caring**

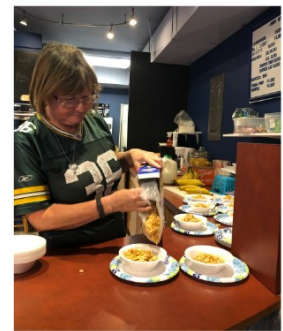
**JAN 29—9:00 AM Class/prepare for Souper Bowl of Caring (Noisy Offering Day)**



# January Newsletter 2023

## National Mentoring Month!

Thank you to our Rocksolid Mentors!  
...and to those not pictured!



**VOLUNTEERS**  
**WELCOME-360-885-2181**

Community Leaders Day is  
January 20th!



### Youth Spotlight...our teens ROCK!



Lexi goes to Columbia River High School and has chosen to complete her Senior Project at ROCKSOLID! Lexi is leading our youth in a Christmas card project for the Senior Community in Clark County. 267 cards will bring holiday cheer to 3 different Senior Living Communities; Mallard Landing, Creekside Place and Cascade Inn. Lexi's favorite class at CRHS is Graphic Design and favorite color is Purple and Gold! She has 3 dogs; Macy, Chance and Bodhi. After Graduation, Lexi hopes to go to Clark College to be a teacher. She loves coming to Rocksolid because it's something fun to do after school and she has met so many new friends. (Lexi likes doing her homework everyday at Rocksolid too!)



Thank you, Bethel, for giving us a home!

12919 NE 159th Street/PO Box 175 Brush Prairie, WA 98606  
360-885-2181 | www.rocksolid-teen.com | Tax ID#36-4634695

Council Meeting Highlights - December 2022

Terry Smith will be coordinating the Sanctuary Committee. If you are interested in serving on the committee, contact Terry Smith or the church office.



JANUARY 8  
FOLLOWING  
WORSHIP

JESUS' BAPTISM

The Men's  
Ministry  
Is Hosting!



PANCAKE  
BREAKFAST

FREEWILL  
OFFERING

Bring your appetite on Sunday January 8<sup>th</sup>. The BLC Men will be serving a pancake breakfast served following service.

**Financial update:**

November: Deposits = \$27,344; Payments = \$33,648;  
Difference of \$-5,413

o YTD\*\*: Deposits = \$326,564; Payments = \$333,739; Difference of \$-7,175

\*\*YTD summary includes the expenses related to new heating / cooling system



gg60129974 GoGraph.com



Musically inclined?  
Here's your chance  
to shine!





## December Council Meeting December 13, 2022

Members Present: Linda Bieker, Ken Coats, Teresa Correy, Dottie Davis, Jim Fuerstenberg, Nancy Fuerstenberg, Jack Graves, Chris Kast, Chad McCabe, Tara McCabe, Val Moon, John Sarver, Ken Saylor, Terry Smith, Erika Stauffer

Staff Present: Jim Bergren, Pastor Lynne Ogren, Bonnie Stauffer

Not in Attendance: Sandy Egan, Candi Ehrich

Incoming Members & Guests: Nanci Keenan, Charles Moon, Ray Sell

### ***Meeting called to order at 6:32pm, by Ken S.***

Meeting opened with a prayer by Pastor Lynne.

Ken thanked the current council members for their service on the council over the past year. He welcomed the incoming council members and recognized those that were ending their terms. Ken read the Mission Statement of the council.

Discussion and share out of how the Annual Meeting went on Sunday:

- Recommend having reports ready earlier in November. This will allow sufficient time for the office to be able to put together draft packet to review before distributing to congregation.
- Need to think about how to host the meeting and accommodate non-voting members of the congregation who may be in attendance that day - for coffee hour, etc.
- Thought it was good to share more information about the dreaming and planning sessions we participated in during the summer.
- Consider having council nominees stand up if they are in attendance so members know who they are voting for.

Separated into Boards at 6:46pm. Attendees reconvened for council meeting at 7:50pm.

### ***Treasurer's Report (Chris)***

In preparation for the Annual Meeting had prepared a 2021 financial summary. Reshared the same information:

2021 Summary: Deposit \$272,990; Payments \$229,666; Difference \$43,323

2022 financial summary based on bank statements.

- November: Deposits = \$27,344; Payments = \$33,648; Difference of \$-5,413
  - YTD\*\* : Deposits = \$326,564; Payments = \$333,739; Difference of \$-7,175
- \*\*YTD summary includes the expenses related to new heating / cooling system

Chris pointed out that it will be important for members of the congregation to clearly state on checks or envelopes where they would like their contributions to be recorded. General Fund, Sanctuary, or other. The council and financial leadership will prepare an update for The Bell and to be included on Sunday bulletins and pre-worship slides.

---

*Council Mission Statement 2022 - As the council of Bethel we will fearlessly follow God's leading, respect and encourage one another, listen to, and communicate with the congregation.*

**Board of Trustees (Jack G)**

An additional stewardship letter has been prepared to remind church members about the importance of stewardship and giving to support the ministries of the church now and into the future. The letter and a contribution reminder card will be mailed to members in the next week or so, to be received by before the start of the new year. The contribution card is not meant to be returned to the church, but to be used as a reminder of what you committed to give on a weekly or monthly basis.

There are additional individuals who have volunteered to help with counting. The process has been documented but we are looking to make some changes to the system and want to finalize those before we train the new volunteers. Hopefully that will happen early in the new year.

The Trustees are investigating changes to our contracted night security. There was a large rate increase from our current provider and we will be looking to rebid the necessary services we need.

At the annual meeting it was proposed and approved to create an account for members to contribute financially to support the remodel or update to the sanctuary. Terry Smith has agreed to lead the committee to start work on ideas for that.

The memorial fund committee needs additional members. Currently looking for members to work with Jan Shephard on this committee. If you or someone you know would like to be on this committee, please contact Jack.

**Board of Education (Linda B)**

Sunday school will be resuming on January 8<sup>th</sup>.

In January the kids will be participating in the Souper Bowl of Caring program. The noisy offering will go to support the North Clark County Food Bank, and the kids will be reminded to bring their giving from their ‘banks’ that day as well.

**Board of Deacons (Erika S)**

Christmas service preparations are done, including candles and worship volunteers. Christmas Eve & Christmas Day Service schedule is as follows:

- Christmas Eve Service at 5:00pm. This service will be live streamed.
- Christmas Eve Service at 7:00pm. This service will NOT be live streamed.
- Christmas Day Service at 10am and will be a Service of Carols. This service will NOT be live streamed.

The holiday decorations will be taken down on Saturday, January 7 following the BLCW breakfast.

Sunday January 8<sup>th</sup> is Epiphany Sunday, and the men will be serving a pancake breakfast following our regular service.

**Pastor’s Report (Pr. Lynne)**

Encouraged the council to think about who our ‘partners’ are. It is easy to get siloed in our faith and in our own congregation. Suggested that we could think about who we want to connect with to support, possibly do events with, or possibly share service with. It would be good to have established options when we might need them in the future.

**Closing (Ken)**

Council retreat needs to be scheduled for January. It was proposed and agreed that January 14 would work for council members. We will plan to meet at the church starting at 9:00am until approximately 12:30pm.

MSA to adjourn at 8:56pm and closed with the Lord’s Prayer.

Respectfully submitted by Teresa Correy



The staff members of Bethel appreciate all the warm wishes, cards, and gifts we received for Christmas!  
 It is our joy and delight to serve the Lord with you all.  
 We wish you a blessed and glorious new year!  
 Pastor Lynne, Judy, Bonnie, and Jim

**January Quilting**  
Join one of the groups  
in the fall.

**Share House Quilters**  
2nd and 4th Monday  
at 9am

**Mission Quilters**  
2nd and 4th Tuesday  
at 9am



**Set-up for  
Sunday Fellowship Hour  
January - Priscilla Circle**

Members of the Circle will set up the coffee for Sunday morning and schedule helpers for clean-up at the close of services.

Hostess Circles are NOT responsible for providing goodies for coffee hours.

All Bethel families are invited to help with food as well as serving & clean up.



**Pick up the phone and call someone. You just might be the bright spot in their day!**

shutterstock.com · 359569490

**Hostess: Priscilla Circle**

**Our Program**

**BLESSINGS JAR CRAFT**



**Be Grateful - Every Day**

**Come join us as we put our creativity to work!**

**The hostess Circle will supply hot dishes, others are asked to bring fruit or breads.**

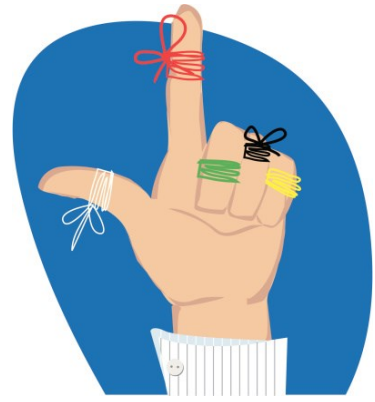
**Ask a friend to join us!**

**Circles meet on Tuesday, Jan 17th, at Bethel  
Priscilla - 9:30am - Naomi - 1:00pm  
Hope Circle - 6:30pm**

Priscilla: Sylvia Vilander, hostess  
Naomi: Gloria Johnson, hostess  
Hope: Candi Ehrich, hostess



**MARK YOUR CALENDAR!**



Classes  
Resume  
For All  
Ages  
January 8  
9:00 AM



Work Day Every Tuesday

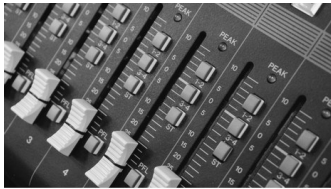
**MEN'S  
MINISTRIES**

Bethel Men are Invited  
to Breakfast and Devotions  
Third Saturday of Each Month  
9:00AM

January 29th  
Noisy Offering  
Bring your change  
to church!







## Join The Audio Visual Ministry Team!

Come join the tech team sending worship services and God's word into the homes of our congregation and out into the world each Sunday. Our tech team consists of video camera, broadcast audio, PowerPoint and sound system operators. For more information, please see Jim Bergren



Join us In person:  
for Worship at 10:00am on Sunday mornings  
on line: follow the links from our website  
[bethelbrushprairie.org](http://bethelbrushprairie.org)  
or on the Phone Patch: 360-729-0011  
Put your phone on speaker  
and don't forget to hit the mute button...

**Masks are welcome, but optional, according to your comfort level**



### Worship Assistants Schedule for January 2023

	Worship Asst	Reader	Greeter	Usher
Jan 1	Bonnie Stauffer/ Jim Bergren	Terry Smith/Ken Sayler/Linda Bieker	Geni Hammer Maureen Smith	Terry Smith Dick Wolf
Jan 8	Eric Ogren	Ken Sayler	Jon Bradley Nanci Keenan	Ken Sayler Larry Kytola
Jan 15	Ken Sayler	Rick Hauser	Claudia Bottemiller Kay Nock	Neal Correy Dennis Stauffer
Jan 22	Charles Moon	Randy Crawley	Chad McCabe Tara McCabe	Jim Fuerstenberg
Jan 29 Noisy Offering	Terry Smith	Jack Graves	Gloria Johnson John Johnson	Craig Ehrich Ken Coats



Got some important Bethel news? You can send updates, or get information to us by e-mailing:



Today we ask for prayer for Grace Wetter, Judy Sutera, Sandi Kytola, Milt Kleven, Jody Huffstutler, Lucille Gukeisen, Denneva Coats, Sheryl Elder, Laurie Haynes and Karen Robison.

We pray for the financial & spiritual health & growth of Bethel and for all who struggle with illness and economic issues. We ask God's guidance and protection on our military, our leaders and our country.

Parish Admin: Judy Wood  
blcoffice@bethelbrushprairie.org

Pastor: Lynne Ogren  
blcpastor@bethelbrushprairie.org

Director of Family Ministries  
Bonnie Stauffer  
blcfamily@bethelbrushprairie.org

A/V Ministry: Jim Bergren  
blcav@bethelbrushprairie.org

RSTC Director  
Marcy Sprecher  
Marcy@rocksolid-teen.com

visit us on the web at  
bethelbrushprairie.org



Thank you Bethel for your continued financial support. Even in these difficult times we have to keep the lights on.

Have you considered setting up automatic giving through your bank or credit union? It's usually done at no charge.

Masks are now optional at Bethel. Wear or not - according to your own comfort level.

Stay well!



February 2023  
Bethel Bell  
Newsletter Articles  
are due by January 20th

Office hours:  
Regular hours  
Mon-Fri 9AM-3:30PM

Please call if you have questions.  
Office: 360-892-4231

*"pray without Ceasing"*  
1 Thessalonians 5:17



*"Always pray and never give up"*  
Luke 18:1

**Are you a part of Bethel's Prayer Chain?**

If not, and you'd like to be, please contact Judy Bergren (phone chain) 360- 666-9134 or Judy Wood (email chain) 360-892-4231 or 360-904-0271. All we need is your name and email address, or your phone number if you don't use a computer...

### Communion January 2023



Communion will be served to those who attend in-person services at Bethel this month.

Communion elements for home use are available at the Bethel office. Call and arrange to come and pick yours up.



Warren Bieker	01/01
Maureen Smith	01/01
Audrey Fossum	01/03
Sandra Kytola	01/08
Barbara (Bobbie) Johnson	01/10
Patricia Ann Hauser	01/11
Marlyne Olson	01/13
Cameron Kast	01/18
James Fuerstenberg	01/19
Celine Bennett	01/21
Claudia Bottemiller	01/25
Hunter Lindberg	01/27
Laura Kast	01/27

Gerald & Judy Wood	01/05/1958
John & Gloria Johnson	01/25/2003
Jack & Cindi Graves	01/30/1971

If you had a birthday or anniversary and are not listed, OR if dates are incorrect or incomplete,



**Keep our Servicemen and women in your prayers..**

**SPC Alec Rohrer**, US Army, grandson of Jack & Cindi Graves, serving at Fort Carson, Co.

**Johnathan Cook, USAF** , grandson of Kay Nock, stationed in Florida

**Chief Petty Officer, Ryan Fontenot**, stationed Texas. Grandson of Milt and Jan Kleven.

**Brandon Morgan, USAF Sp. Forces Para rescue**, grandson of Milt & Jan Kleven, stationed in Tucson, AZ

**Zackery Scott Noorlun, USAF, TSgt** , great-grandson of Clarice Noorlun, serving as an avionics technician at Royal Air Force Lakenheath in the UK.

**Ingrid Flores, E-4** US Combat Medic, who returned safely in July 2020 from a year of service in Jordan. Great niece of Craig and Candi Ehrich, who continues to serve with the Army National Guard.

**Nick Otos, USAF**, nephew of Kari Otos, stationed at Okinawa, Japan

**Luke Terry - US Air Force**, stationed in Germany.

**Lonnie Terry - US Air Force**, stationed in New Mexico.

**Derrick Wolf, USN**, grandson of Dick & Charlene Wolf. Derrick is on recruiting duty in Virginia.

**Chandler Heppe, USAF**, Capt, nephew of Eric & Lynne Ogren, stationed in Utah.

**Regan Heppe, USAF**, Lt. niece of Eric and Lynne Ogren, stationed in Mississippi

**A soldier said: "When I die do not play taps over my grave. Instead play reveille, the morning call, the summons to arise."**

**If you have an update for this list, please let the office know.. Thanks!**

Bethel Lutheran Church  
12919 NE 159th St  
PO Box 175  
Brush Prairie, WA 98606



## *Christ Welcomes All*

### **Stay Informed....**

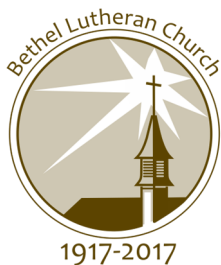
There are many ways for you to keep up with what's going on here at Bethel..  
You may visit us **on the web** at [www.bethelbrushprairie.org](http://www.bethelbrushprairie.org)

**Like us on Facebook!** Click the LIKE button to stay on top of all the  
current news and photos! [www.facebook.com/bethelfamilyministry](https://www.facebook.com/bethelfamilyministry)

You can also follow Bethel on:

**Pinterest** <https://www.pinterest.com/bethelblessings/> and

**Instagram** <https://www.instagram.com/blcfamily/>



**If you're unable to join us in-person please  
won't you join us virtually??**

**Sunday Service Hours**

**In-person 10:00am**

**Streaming Service - YouTube**

**Phone patch - 360-729-0011**

**Watch the Bethel Bell and the Mid-Week (on line)  
for Coming Events!**